

# ELECTROCARDIOGRAPHIC CASE

## AN UNCOMMON ARRHYTHMIA

K S Ng, T C Yeo, M H Choo

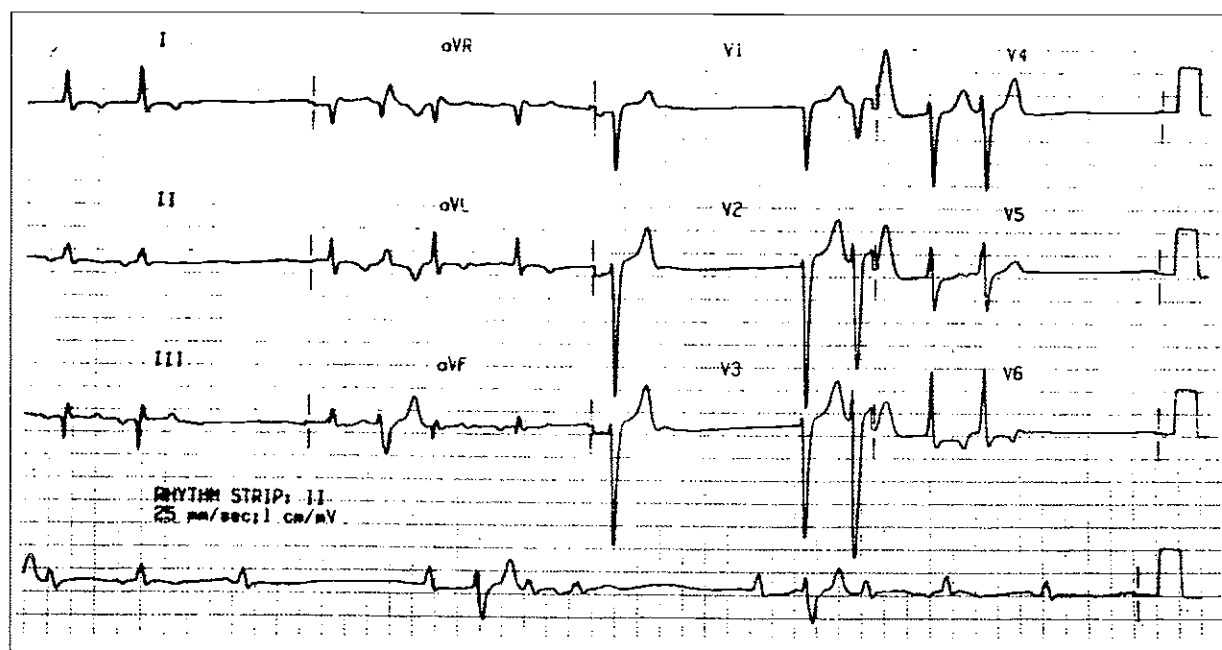
### CASE REPORT

A 65-year-old Chinese female with diabetes mellitus, hypertension and ischaemic heart disease was admitted for lethargy and malaise over two weeks. Her presenting ECG is shown in Fig 1. She had been treated recently for a urinary tract infection. Two days before admission, she had visited the hospital's emergency department and had an ECG done (Fig 2). The attending doctor diagnosed mild heart failure, prescribed diuretics and discharged her.

What further investigation will confirm the diagnosis? (Answer on page 544)

SINGAPORE MED J 1994; Vol 35: 523-524 & 544

Fig 1 – 12-lead ECG on admission



Cardiac Department  
National University Hospital  
Lower Kent Ridge Road  
Singapore 0511

K S Ng, MBBS, MRCP(UK), FAMS  
Senior Registrar

T C Yeo, MBBS, MRCP(UK)  
Registrar

M H Choo, MD, M Med(Int Med), FRCP(UK), FAMS  
Senior Consultant and Chief

Correspondence to: Dr K S Ng

Fig 2 – 12-lead ECG at hospital emergency department 2 days prior to admission.

