

ELECTROCARDIOGRAPHIC CASE

"EPILEPSY" IN A YOUNG FEMALE

W S Teo

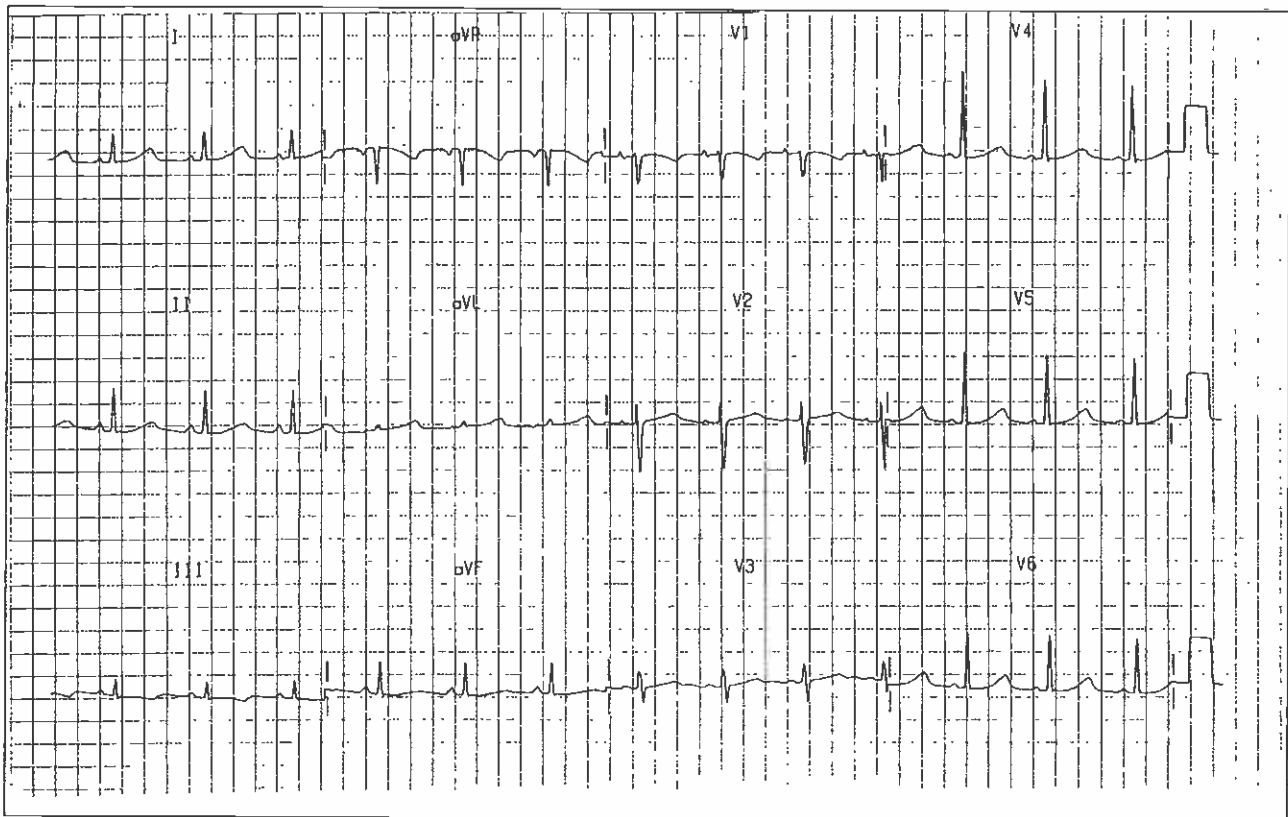
CASE REPORT

PLH, a 30-year-old female Chinese, presented with a history of recurrent fits 4 weeks after delivery of her third child. She has had a history of recurrent fits treated as for epilepsy, with phenytoin previously.

Her 12-lead electrocardiogram is shown in Fig 1. What is your diagnosis? (Answer on page 222)

SINGAPORE MED J 1994; Vol 35: 204 & 222

Fig 1 – 12-lead electrocardiogram on admission



Department of Cardiology
Singapore General Hospital
Outram Road
Singapore 0316

W S Teo, MBBS, M Med (Int Med), MRCP (UK), FAMS
Consultant